

PACO14458

Product Information

Size:

50ul

Reactivity:

Human, Mouse, Rat

Source:

Rabbit

Isotype:

IgG

Applications:

ELISA, WB, IHC

Recommended dilutions:

ELISA:1:2000-1:5000, WB:1:500-1:2000,
IHC:1:25-1:100

Protein Background:

Glycosphingolipids (GSLs) are a group of membrane components that contain lipid and sugar moieties. They are present in essentially all animal cells and are believed to have important roles in various cellular processes. UDP-glucose ceramide glucosyltransferase catalyzes the first glycosylation step in glycosphingolipid biosynthesis. The product, glucosylceramide, is the core structure of more than 300 GSLs. UGCG is widely expressed and transcription is upregulated during keratinocyte differentiation.

Gene ID:

UGCG

Uniprot

Q16739

Synonyms:

UDP-glucose ceramide glucosyltransferase

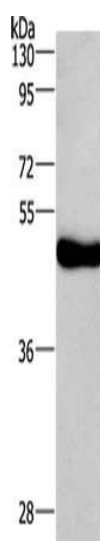
Immunogen:

Fusion protein of human UGCG.

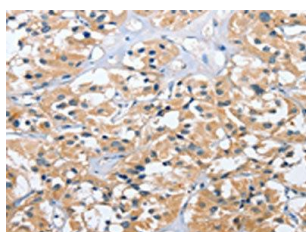
Storage:

-20° C, pH7.4 PBS, 0.05% NaN₃, 40% Glycerol

Product Images



Gel: 10%SDS-PAGE, Lysate: 40 μ g, Lane: A431 cells, Primary antibody: PACO14458(UGCG Antibody) at dilution 1/800, Secondary antibody: Goat anti rabbit IgG at 1/8000 dilution, Exposure time: 1 minute.



The image on the left is immunohistochemistry of paraffin-embedded Human thyroid cancer tissue using PACO14458(UGCG Antibody) at dilution 1/40, on the right is treated with fusion protein. (Original magnification: x—200).