

PACO14574

Product Information

Size:

50ul

Reactivity:

Human, Mouse

Source:

Rabbit

Isotype:

IgG

Applications:

ELISA, WB, IHC

Recommended dilutions:

ELISA:1:2000-1:5000, WB:1:500-1:2000,
IHC:1:50-1:200

Protein Background:

Mitochondrial inner membrane protein is a protein that in humans is encoded by the IMMT gene. IMMT has been shown to interact with BAT2. The mitochondrial inner membrane (IM) serves as the site for ATP production by hosting the oxidative phosphorylation complex machinery most notably on the crista membranes. Disruption of the crista structure has been implicated in a variety of cardiovascular and neurodegenerative diseases.

Gene ID:

IMMT

Uniprot

Q16891

Synonyms:

inner membrane protein, mitochondrial

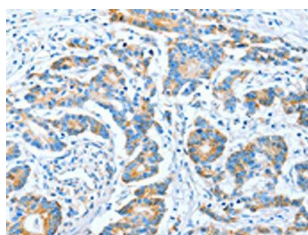
Immunogen:

Fusion protein of human IMMT.

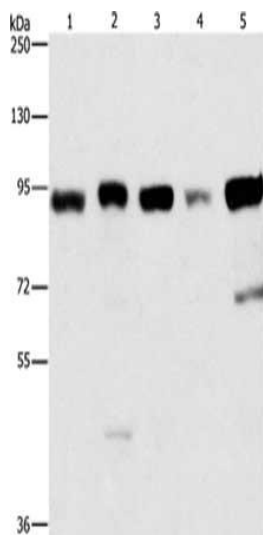
Storage:

-20° C, pH7.4 PBS, 0.05% NaN₃, 40% Glycerol

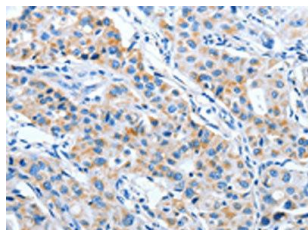
Product Images



The image on the left is immunohistochemistry of paraffin-embedded Human colon cancer tissue using PACO14574(IMMT Antibody) at dilution 1/70, on the right is treated with fusion protein. (Original magnification: x—200).



Gel: 6%SDS-PAGE, Lysate: 40 μ g, Lane 1-5: Raji cells, 231 cells, HepG2 cells, Hela cells, 293T cells, Primary antibody: PACO14574(IMMT Antibody) at dilution 1/270 dilution, Secondary antibody: Goat anti rabbit IgG at 1/8000 dilution, Exposure time: 5 seconds.



The image on the left is immunohistochemistry of paraffin-embedded Human lung cancer tissue using PACO14574(IMMT Antibody) at dilution 1/70, on the right is treated with fusion protein. (Original magnification: x—200).