

PACO14581

Product Information

Size:

50ul

Reactivity:

Human, Mouse, Rat

Source:

Rabbit

Isotype:

IgG

Applications:

ELISA, IHC

Recommended dilutions:

ELISA:1:1000-1:5000, IHC:1:150-1:500

Protein Background:

This gene encodes the alpha subunit of inhibins A and B protein complexes. These complexes negatively regulate follicle stimulating hormone secretion from the pituitary gland. Inhibins have also been implicated in regulating numerous cellular processes including cell proliferation, apoptosis, immune response and hormone secretion.

Gene ID:

INHA

Uniprot

P05111

Synonyms:

inhibin, alpha

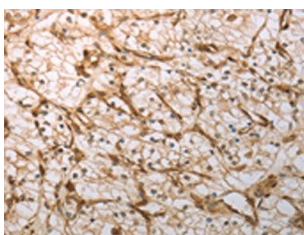
Immunogen:

Fusion protein of human INHA.

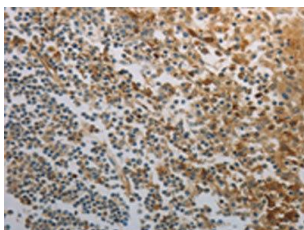
Storage:

-20° C, pH7.4 PBS, 0.05% NaN₃, 40% Glycerol

Product Images



The image on the left is immunohistochemistry of paraffin-embedded Human renal cancer tissue using PACO14581(INHA Antibody) at dilution 1/150, on the right is treated with fusion protein. (Original magnification: x—200).



The image on the left is immunohistochemistry of paraffin-embedded Human tonsil tissue using PACO14581(INHA Antibody) at dilution 1/150, on the right is treated with fusion protein. (Original magnification: x—200).