

KLF15 Antibody



PACO14622

Product Information

Size:

50ul

Reactivity:

Human, Mouse

Source:

Rabbit

Isotype:

IgG

Applications:

ELISA, IHC

Recommended dilutions:

ELISA:1:2000-1:5000, IHC:1:25-1:100

Protein Background:

Krüppel-like factor 15 is a protein that in humans is encoded by the KLF15 gene in the Krüppel-like factor family. KLF15, a kidney-enriched Krüppel-like factor, is a transcriptional activator that binds the CLCNKA promoter. KLF15, which is a nuclear protein, is expressed primarily in liver, heart, skeletal muscle and kidney tissues but is not detected in lymphoid tissues or bone marrow. It is an important regulator of GLUT4 in both adipose and muscle tissues.

Gene ID:

KLF15

Uniprot

Q9UIH9

Synonyms:

Kruppel-like factor 15

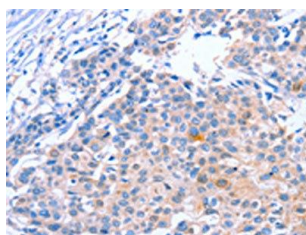
Immunogen:

Fusion protein of human KLF15.

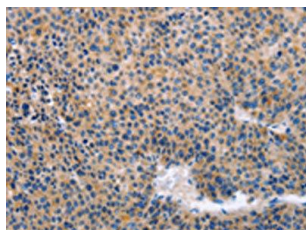
Storage:

-20°C; C, pH7.4 PBS, 0.05% NaN₃, 40% Glycerol

Product Images



The image on the left is immunohistochemistry of paraffin-embedded Human breast cancer tissue using PACO14622(KLF15 Antibody) at dilution 1/30, on the right is treated with fusion protein. (Original magnification: x—200).



The image on the left is immunohistochemistry of paraffin-embedded Human liver cancer tissue using PACO14622(KLF15 Antibody) at dilution 1/30, on the right is treated with fusion protein. (Original magnification: x—200).