

LRP12 Antibody



PACO14654

Product Information

Size:

50ul

Reactivity:

Human, Mouse

Source:

Rabbit

Isotype:

IgG

Applications:

ELISA, WB, IHC

Recommended dilutions:

ELISA:1:1000-1:5000, WB:1:200-1:1000,
IHC:1:25-1:100

Protein Background:

This gene encodes a member of the low-density lipoprotein receptor related protein family. The product of this gene is a transmembrane protein that is differentially expressed in many cancer cells. Alternate splicing results in multiple transcript variants.

Gene ID:

LRP12

Uniprot

Q9Y561

Synonyms:

low density lipoprotein receptor-related protein 12

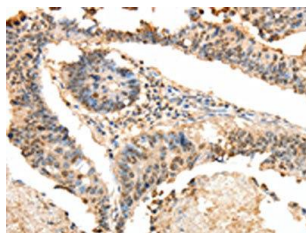
Immunogen:

Fusion protein of human LRP12.

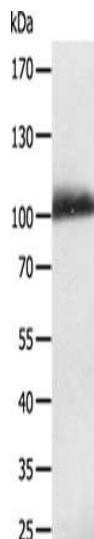
Storage:

-20°C; C, pH7.4 PBS, 0.05% NaN₃, 40% Glycerol

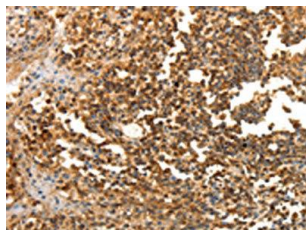
Product Images



The image on the left is immunohistochemistry of paraffin-embedded Human colon cancer tissue using PACO14654(LRP12 Antibody) at dilution 1/25, on the right is treated with fusion protein. (Original magnification: x—200).



Gel: 8%SDS-PAGE, Lysate: 40 μ g, Lane: Human liver cancer tissue, Primary antibody: PACO14654(LRP12 Antibody) at dilution 1/200, Secondary antibody: Goat anti rabbit IgG at 1/8000 dilution, Exposure time: 10 minutes.



The image on the left is immunohistochemistry of paraffin-embedded Human tonsil tissue using PACO14654(LRP12 Antibody) at dilution 1/25, on the right is treated with fusion protein. (Original magnification: x—200).