

PACO14663

Product Information

Size:

50ul, 100ul

Reactivity:

Human, Mouse

Form:

Liquid

Conjugate:

Non-conjugated

Source:

Rabbit

Isotype:

IgG

Applications:

ELISA, WB, IHC

Recommended dilutions:

ELISA: 1:1000-1:2000,

WB: 1:200-1:1000,

IHC: 1:15-1:50

Purification Method:

Antigen affinity purification

Protein Background:

This gene encodes a type I integral membrane glycoprotein. The encoded protein acts as a receptor and binds to both soluble and immobilized hyaluronan. This protein may function in lymphatic hyaluronan transport and have a role in tumour metastasis.

Gene ID:

LYVE1

Uniprot

Q9Y5Y7

Synonyms:

lymphatic vessel endothelial hyaluronan receptor 1

Immunogen:

Fusion protein of human LYVE1.

Immunogen Species:

Homo sapiens (Human)

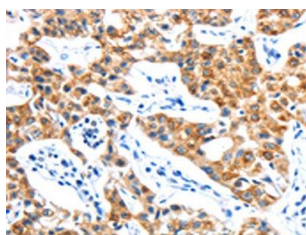
Storage:

Upon receipt, store at -20°C or -80°C. Avoid repeated freeze.

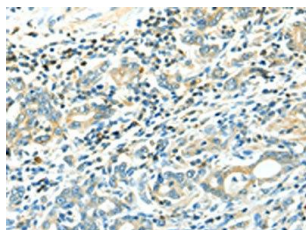
Storage Buffer:

-20°C; C, pH7.4 PBS, 0.05% NaN₃, 40% Glycerol

Product Images



The image on the left is immunohistochemistry of paraffin-embedded Human lung cancer tissue using PACO14663(LYVE1 Antibody) at dilution 1/15, on the right is treated with fusion protein. (Original magnification: x200).



The image on the left is immunohistochemistry of paraffin-embedded Human gastric cancer tissue using PACO14663(LYVE1 Antibody) at dilution 1/15, on the right is treated with fusion protein. (Original magnification: x200).



Gel: 10%SDS-PAGE, Lysate: 50 μ g, Lane: Mouse liver tissue, Primary antibody: PACO14663(LYVE1 Antibody) at dilution 1/300, Secondary antibody: Goat anti rabbit IgG at 1/8000 dilution. Exposure time: 20 seconds.