

MT2A Antibody



PACO14700

Product Information

Size:

50ul

Reactivity:

Human

Source:

Rabbit

Isotype:

IgG

Applications:

ELISA, IHC

Recommended dilutions:

ELISA:1:2000-1:5000, IHC:1:25-1:100

Protein Background:

no message.

Gene ID:

MT2A

Uniprot

P02795

Synonyms:

metallothionein 2A

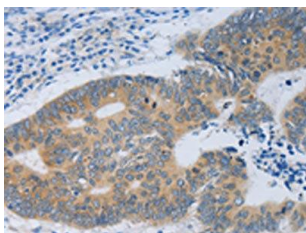
Immunogen:

Fusion protein of human MT2A.

Storage:

-20° C, pH7.4 PBS, 0.05% NaN3, 40% Glycerol

Product Images



The image on the left is immunohistochemistry of paraffin-embedded Human colon cancer tissue using PACO14700(MT2A Antibody) at dilution 1/40, on the right is treated with fusion protein. (Original magnification: x—200).