

# MMP15 Antibody



PACO14710

---

## Product Information

**Size:**

50ul

**Reactivity:**

Human, Mouse

**Source:**

Rabbit

**Isotype:**

IgG

**Applications:**

ELISA, WB

**Recommended dilutions:**

ELISA:1:2000-1:5000, WB:1:500-1:2000

**Protein Background:**

Proteins of the matrix metalloproteinase (MMP) family are involved in the breakdown of extracellular matrix in normal physiological processes, such as embryonic development, reproduction, and tissue remodeling, as well as in disease processes, such as arthritis and metastasis. Most MMP's are secreted as inactive proproteins which are activated when cleaved by extracellular proteinases. However, the protein encoded by this gene is a member of the membrane-type MMP (MT-MMP) subfamily; each member of this subfamily contains a potential transmembrane domain suggesting that these proteins are expressed at the cell surface rather than secreted.

**Gene ID:**

MMP15

**Uniprot**

P51511

**Synonyms:**

matrix metalloproteinase 15 (membrane-inserted)

**Immunogen:**

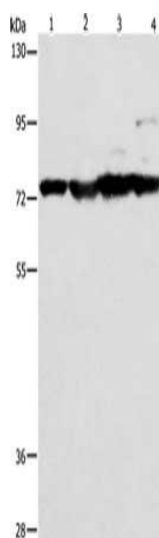
Fusion protein of human MMP15.

**Storage:**

-20°C, pH7.4 PBS, 0.05% NaN3, 40% Glycerol

## Product Images

---



Gel: 8%SDS-PAGE, Lysate: 40  $\mu$ g, Lane 1-4: Mouse stomach tissue, Mouse heart tissue, Mouse liver tissue, HT29 cells, Primary antibody: PACO14710(MMP15 Antibody) at dilution 1/200, Secondary antibody: Goat anti rabbit IgG at 1/8000 dilution, Exposure time: 1 minute.