
Product Information

Size:

50ul

Reactivity:

Human, Mouse

Source:

Rabbit

Isotype:

IgG

Applications:

ELISA, WB, IHC

Recommended dilutions:

ELISA:1:1000-1:5000, WB:1:200-1:1000,
IHC:1:10-1:50

Protein Background:

The protein encoded by this gene forms a heterodimer with MSH2 to form MutS beta, part of the post-replicative DNA mismatch repair system. MutS beta initiates mismatch repair by binding to a mismatch and then forming a complex with MutL alpha heterodimer. This gene contains a polymorphic 9 bp tandem repeat sequence in the first exon. The repeat is present 6 times in the reference genome sequence and 3-7 repeats have been reported. Defects in this gene are a cause of susceptibility to endometrial cancer.

Gene ID:

MSH3

Uniprot

P20585

Synonyms:

mutS homolog 3 (E. coli)

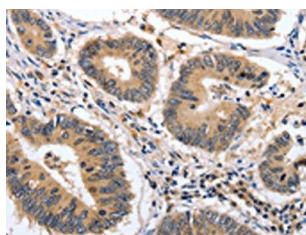
Immunogen:

Fusion protein of human MSH3.

Storage:

-20°C; C, pH7.4 PBS, 0.05% NaN₃, 40% Glycerol

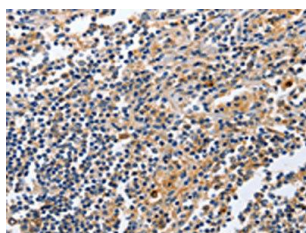
Product Images



The image on the left is immunohistochemistry of paraffin-embedded Human colon cancer tissue using PACO14725(MSH3 Antibody) at dilution 1/20, on the right is treated with fusion protein. (Original magnification: x—200).



Gel: 8%SDS-PAGE, Lysate: 30 μ g, Lane: Hela cells, Primary antibody: PACO14725(MSH3 Antibody) at dilution 1/250, Secondary antibody: Goat anti rabbit IgG at 1/8000 dilution, Exposure time: 1 second.



The image on the left is immunohistochemistry of paraffin-embedded Human tonsil tissue using PACO14725(MSH3 Antibody) at dilution 1/20, on the right is treated with fusion protein. (Original magnification: x—200).