

MLH1 Antibody



PACO14727

Product Information

Size:

50ul

Reactivity:

Human, Mouse, Rat

Source:

Rabbit

Isotype:

IgG

Applications:

ELISA, IHC

Recommended dilutions:

ELISA:1:2000-1:5000, IHC:1:50-1:200

Protein Background:

This gene was identified as a locus frequently mutated in hereditary nonpolyposis colon cancer (HNPCC). It is a human homolog of the E. coli DNA mismatch repair gene mutL, consistent with the characteristic alterations in microsatellite sequences (RER+phenotype) found in HNPCC. Alternative splicing results in multiple transcript variants encoding distinct isoforms. Additional transcript variants have been described, but their full-length natures have not been determined.

Gene ID:

MLH1

Uniprot

P40692

Synonyms:

mutL homolog 1

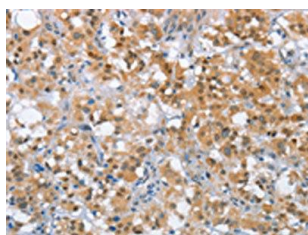
Immunogen:

Fusion protein of human MLH1.

Storage:

-20° C, pH7.4 PBS, 0.05% NaN₃, 40% Glycerol

Product Images



The image on the left is immunohistochemistry of paraffin-embedded Human thyroid cancer tissue using PACO14727(MLH1 Antibody) at dilution 1/65, on the right is treated with fusion protein. (Original magnification: x—200).