

MYL2 Antibody



PACO14738

Product Information

Size:

50ul

Reactivity:

Human, Mouse, Rat

Source:

Rabbit

Isotype:

IgG

Applications:

ELISA, WB

Recommended dilutions:

ELISA:1:2000-1:5000, WB:1:500-1:2000

Protein Background:

Thus gene encodes the regulatory light chain associated with cardiac myosin beta (or slow) heavy chain. Ca⁺ triggers the phosphorylation of regulatory light chain that in turn triggers contraction. Mutations in this gene are associated with mid-left ventricular chamber type hypertrophic cardiomyopathy.

Gene ID:

MYL2

Uniprot

P10916

Synonyms:

myosin, light chain 2, regulatory, cardiac, slow

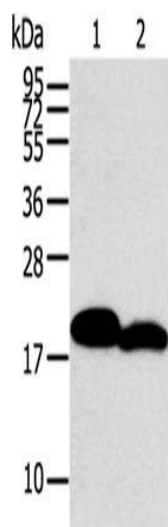
Immunogen:

Fusion protein of human MYL2.

Storage:

-20° C, pH7.4 PBS, 0.05% NaN₃, 40% Glycerol

Product Images



Gel: 12%SDS-PAGE, Lysate: 40 μ g, Lane 1-2: Mouse heart tissue, Mouse skin tissue, Primary antibody: PACO14738(MYL2 Antibody) at dilution 1/400, Secondary antibody: Goat anti rabbit IgG at 1/8000 dilution, Exposure time: 10 seconds.