

SERPINE2 Antibody



PACO14831

Product Information

Size:

50ul

Reactivity:

Human, Mouse, Rat

Source:

Rabbit

Isotype:

IgG

Applications:

ELISA, WB, IHC

Recommended dilutions:

ELISA:1:2000-1:5000, WB:1:500-1:2000,
IHC:1:25-1:100

Protein Background:

This gene encodes a member of the serpin family of proteins, a group of proteins that inhibit serine proteases. Thrombin, urokinase, plasmin and trypsin are among the proteases that this family member can inhibit. This gene is a susceptibility gene for chronic obstructive pulmonary disease and for emphysema. Alternative splicing results in multiple transcript variants.

Gene ID:

SERPINE2

Uniprot

P07093

Synonyms:

serpin peptidase inhibitor, clade E (nexin, plasminogen activator inhibitor type 1), member 2

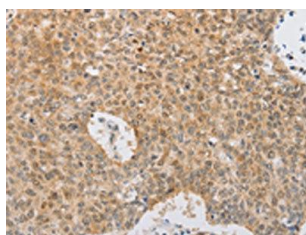
Immunogen:

Fusion protein of human SERPINE2.

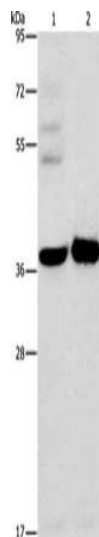
Storage:

-20° C, pH7.4 PBS, 0.05% NaN₃, 40% Glycerol

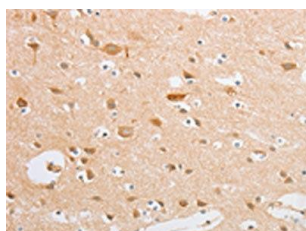
Product Images



The image on the left is immunohistochemistry of paraffin-embedded Human lung cancer tissue using PACO14831(SERPINE2 Antibody) at dilution 1/20, on the right is treated with fusion protein. (Original magnification: x—200).



Gel: 8%SDS-PAGE, Lysate: 40 μ g, Lane 1-2: A172 cells, human fetal brain tissue, Primary antibody: PACO14831(SERPINE2 Antibody) at dilution 1/450, Secondary antibody: Goat anti rabbit IgG at 1/8000 dilution, Exposure time: 15 seconds.



The image on the left is immunohistochemistry of paraffin-embedded Human brain tissue using PACO14831(SERPINE2 Antibody) at dilution 1/20, on the right is treated with fusion protein. (Original magnification: x—200).