

FAM3A Antibody



PACO14840

Product Information

Size:

50ul

Reactivity:

Human, Mouse

Source:

Rabbit

Isotype:

IgG

Applications:

ELISA, WB, IHC

Recommended dilutions:

ELISA:1:1000-1:5000, WB:1:200-1:1000,
IHC:1:15-1:50

Protein Background:

A novel cytokine-like gene family using structure-based methods to search for novel four-helix-bundle cytokines in genomics databases. There are four genes in this family, FAM3A, FAM3B, FAM3C, and FAM3D, each encoding a protein (224-235 amino acid,) with a hydrophobic leader sequence. Northern analysis indicates that FAM3B is highly expressed in pancreas, FAM3D in placenta, and FAM3A and FAM3C in almost all tissues. Immunohistochemistry showed that FAM3A is expressed prominently in the vascular endothelium, particularly capillaries. Fam3a staining in capillary endothelium and endocardium of heart, as well as vascular endothelial staining in many other tissues.

Gene ID:

FAM3A

Uniprot

P98173

Synonyms:

amily with sequence similarity 3, member A

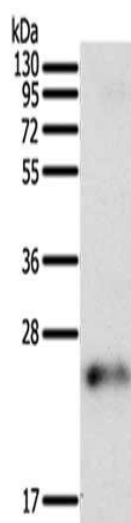
Immunogen:

Fusion protein of human FAM3A.

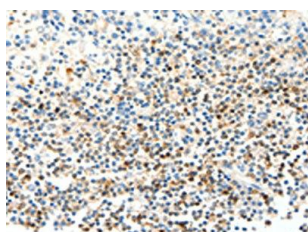
Storage:

-20° C, pH7.4 PBS, 0.05% NaN3, 40% Glycerol

Product Images



Gel: 12%SDS-PAGE, Lysate: 50 μ g, Lane: Human fetal brain tissue, Primary antibody: PACO14840(FAM3A Antibody) at dilution 1/200, Secondary antibody: Goat anti rabbit IgG at 1/8000 dilution, Exposure time: 5 minutes.



The image on the left is immunohistochemistry of paraffin-embedded Human tonsil tissue using PACO14840(FAM3A Antibody) at dilution 1/25, on the right is treated with fusion protein. (Original magnification: \times —200).