

# PEBP1 Antibody



PACO14892

---

## Product Information

**Size:**

50ul

**Reactivity:**

Human, Mouse, Rat

**Source:**

Rabbit

**Isotype:**

IgG

**Applications:**

ELISA, WB, IHC

**Recommended dilutions:**

ELISA:1:1000-1:5000, WB:1:500-1:2000,  
IHC:1:50-1:200

**Protein Background:**

Phosphatidylethanolamine-binding protein 1 is a protein that in humans is encoded by the PEBP1 gene. Binds ATP, opioids and phosphatidylethanolamine. Has lower affinity for phosphatidylinositol and phosphatidylcholine. Serine protease inhibitor which inhibits thrombin, neuropsin and chymotrypsin but not trypsin, tissue type plasminogen activator and elastase By similarity. Inhibits the kinase activity of RAF1 by inhibiting its activation and by dissociating the RAF1/MEK complex and acting as a competitive inhibitor of MEK phosphorylation.

**Gene ID:**

PEBP1

**Uniprot**

P30086

**Synonyms:**

phosphatidylethanolamine binding protein 1

**Immunogen:**

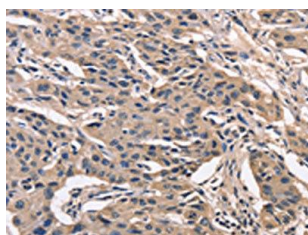
Fusion protein of human PEBP1.

**Storage:**

-20&deg; C, pH7.4 PBS, 0.05% NaN3, 40% Glycerol

## Product Images

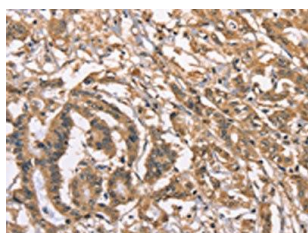
---



The image on the left is immunohistochemistry of paraffin-embedded Human lung cancer tissue using PACO14892(PEBP1 Antibody) at dilution 1/40, on the right is treated with fusion protein. (Original magnification: x—200).



Gel: 8%SDS-PAGE, Lysate: 40 &mu; g, Lane 1-4: A549 cells, K562 cells, hela cells, hepG2 cells, Primary antibody: PACO14892(PEBP1 Antibody) at dilution 1/400, Secondary antibody: Goat anti rabbit IgG at 1/8000 dilution, Exposure time: 40 seconds.



The image on the left is immunohistochemistry of paraffin-embedded Human colon cancer tissue using PACO14892(PEBP1 Antibody) at dilution 1/40, on the right is treated with fusion protein. (Original magnification: x—200).