

Product Information

Size:

50ul

Reactivity:

Human, Mouse

Source:

Rabbit

Isotype:

IgG

Applications:

ELISA, WB, IHC

Recommended dilutions:

ELISA:1:1000-1:2000, WB:1:200-1:1000,
IHC:1:25-1:100

Protein Background:

The protein encoded by this gene is a lysosomal prolylcarboxypeptidase, which cleaves C-terminal amino acid, linked to proline in peptides such as angiotension II, III and des-Arg9-bradykinin. The cleavage occurs at acid, c pH, but the enzyme activity is retained with some substrates at neutral pH. This enzyme has been shown to be an activator of the cell matrix-associated prekallikrein. The importance of angiotension II, one of the substrates of this enzyme, in regulating blood pressure and electrolyte balance suggests that this gene may be related to essential hypertension. Alternatively spliced transcript variants encoding distinct isoforms have been observed.

Gene ID:

PRCP

Uniprot

P42785

Synonyms:

Prolylcarboxypeptidase (angiotensinase C)

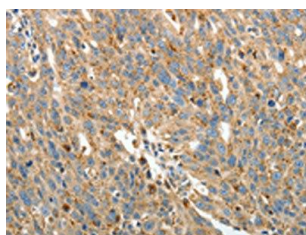
Immunogen:

Fusion protein of human PRCP.

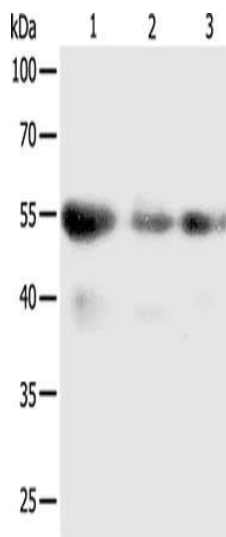
Storage:

-20° C, pH7.4 PBS, 0.05% NaN3, 40% Glycerol

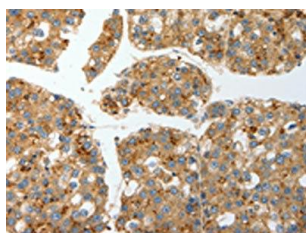
Product Images



The image on the left is immunohistochemistry of paraffin-embedded Human ovarian cancer tissue using PACO14907(PRCP Antibody) at dilution 1/15, on the right is treated with fusion protein. (Original magnification: x—200).



Gel: 10%SDS-PAGE, Lysate: 50 μ g, Lane 1-3: SKOV3 cells, A549 cells, human liver cancer tissue, Primary antibody: PACO14907(PRCP Antibody) at dilution 1/100, Secondary antibody: Goat anti rabbit IgG at 1/8000 dilution, Exposure time: 5 minutes.



The image on the left is immunohistochemistry of paraffin-embedded Human liver cancer tissue using PACO14907(PRCP Antibody) at dilution 1/15, on the right is treated with fusion protein. (Original magnification: x—200).