

PACO14914

---

## Product Information

**Size:**

50ul

**Reactivity:**

Human, Mouse

**Source:**

Rabbit

**Isotype:**

IgG

**Applications:**

ELISA, WB, IHC

**Recommended dilutions:**

ELISA:1:1000-1:2000, WB:1:200-1:1000,  
IHC:1:25-1:100

**Protein Background:**

This gene encodes one of two non-identical subunits that constitute ribonucleoside-diphosphate reductase, an enzyme essential for the production of deoxyribonucleotides prior to DNA synthesis in S phase of dividing cells. It is one of several genes located in the imprinted gene domain of 11p15.5, an important tumor-suppressor gene region. Alterations in this region have been associated with the Beckwith-Wiedemann syndrome, Wilms tumor, rhabdomyosarcoma, adrenocortical carcinoma, and lung, ovarian, and breast cancer. This gene may play a role in malignancies and disease that involve this region.

**Gene ID:**

RRM1

**Uniprot**

P23921

**Synonyms:**

Ribonucleotide reductase M1

**Immunogen:**

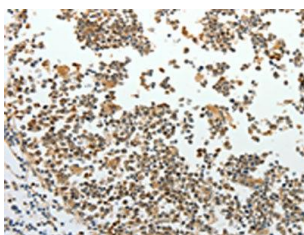
Fusion protein of human RRM1.

**Storage:**

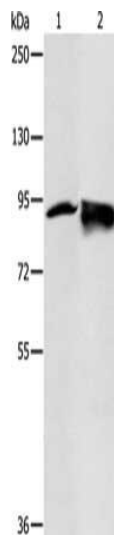
-20°C; C, pH7.4 PBS, 0.05% NaN<sub>3</sub>, 40% Glycerol

## Product Images

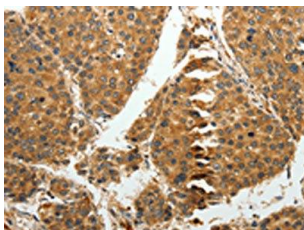
---



The image on the left is immunohistochemistry of paraffin-embedded Human tonsil tissue using PACO14914(RRM1 Antibody) at dilution 1/15, on the right is treated with fusion protein. (Original magnification: x—200).



Gel: 10%SDS-PAGE, Lysate: 50 &mu; g, Lane 1-2: HeLa cells, 231 cells, Primary antibody: PACO14914(RRM1 Antibody) at dilution 1/200, Secondary antibody: Goat anti rabbit IgG at 1/8000 dilution, Exposure time: 1 minute.



The image on the left is immunohistochemistry of paraffin-embedded Human liver cancer tissue using PACO14914(RRM1 Antibody) at dilution 1/15, on the right is treated with fusion protein. (Original magnification: x—200).