

PACO14957

Product Information

Size:

50ul

Reactivity:

Human

Source:

Rabbit

Isotype:

IgG

Applications:

ELISA, IHC

Recommended dilutions:

ELISA:1:2000-1:5000, IHC:1:50-1:200

Protein Background:

Resistin-like beta is a protein that in humans is encoded by the RETNLB gene. An infusion of either resistin or RELMB in rats rapidly induced severe hepatic but not peripheral insulin resistance. Increases in circulating resistin or RELMB levels markedly stimulated hepatic glucose production despite the presence of fixed physiologic insulin levels. This enhanced rate of glucose output was due to increased flux through glucose-6-phosphatase. The results supported the notion that a novel family of fat- and gut-derived circulating proteins modulates hepatic insulin action.

Gene ID:

RETNLB

Uniprot

Q9BQ08

Synonyms:

resistin like beta

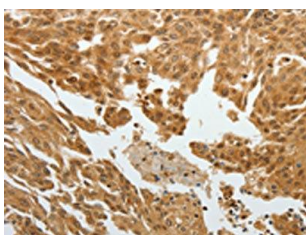
Immunogen:

Fusion protein of human RETNLB.

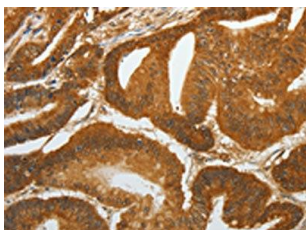
Storage:

-20° C, pH7.4 PBS, 0.05% NaN3, 40% Glycerol

Product Images



The image on the left is immunohistochemistry of paraffin-embedded Human cervical cancer tissue using PACO14957 (RETNLB Antibody) at dilution 1/40, on the right is treated with fusion protein. (Original magnification: x—200).



The image on the left is immunohistochemistry of paraffin-embedded Human colon cancer tissue using PACO14957 (RETNLB Antibody) at dilution 1/40, on the right is treated with fusion protein. (Original magnification: x—200).