

# SEMA3G Antibody



PACO14973

---

## Product Information

**Size:**

50ul

**Reactivity:**

Human

**Source:**

Rabbit

**Isotype:**

IgG

**Applications:**

ELISA, WB

**Recommended dilutions:**

ELISA:1:1000-1:5000, WB:1:200-1:1000

**Protein Background:**

Semaphorins are a class of secreted and membrane proteins that act as axonal growth cone guidance molecules. They primarily act as short-range inhibitory signals and signal through multimeric receptor complexes. They are usually cues to deflect axons from inappropriate regions, especially important in neural system development. The major class of proteins that act as their receptors are called plexins. SEMA3G possesses anti-migration and anti-invasion ability. SEMA3G inhibited tumor cell migration and invasion, which may be obtained through cell autonomous or paracrine mechanisms, and SEMA3G is a potential target for antitumor migration and invasion.

**Gene ID:**

SEMA3G

**Uniprot**

Q9NS98

**Synonyms:**

sema domain, immunoglobulin domain (Ig), short basic domain, secreted, (semaphorin) 3G

**Immunogen:**

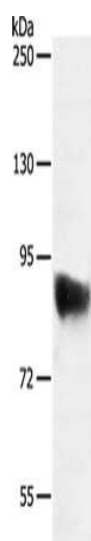
Fusion protein of human SEMA3G.

**Storage:**

-20&deg; C, pH7.4 PBS, 0.05% NaN3, 40% Glycerol

## Product Images

---



Gel: 8%SDS-PAGE, Lysate: 50  $\mu$ g, Lane: Jurkat cells, Primary antibody: PACO14973(SEMA3G Antibody) at dilution 1/400, Secondary antibody: Goat anti rabbit IgG at 1/8000 dilution, Exposure time: 30 minutes.