

SLC25A11 Antibody



PACO14999

Product Information

Size:

50ul

Reactivity:

Human, Mouse, Rat

Source:

Rabbit

Isotype:

IgG

Applications:

ELISA, WB, IHC

Recommended dilutions:

ELISA:1:1000-1:5000, WB:1:500-1:2000,
IHC:1:25-1:100

Protein Background:

The oxoglutarate/malate carrier transports 2-oxoglutarate across the inner membranes of mitochondria in an electroneutral exchange for malate or other dicarboxylic acid, and plays an important role in several metabolic processes, contains the malate-aspartate shuttle, the oxoglutarate/isocitrate shuttle, in gluconeogenesis from lactate, and in nitrogen metabolism.

Gene ID:

SLC25A11

Uniprot

Q02978

Synonyms:

solute carrier family 25 (mitochondrial carrier; oxoglutarate carrier), member 11

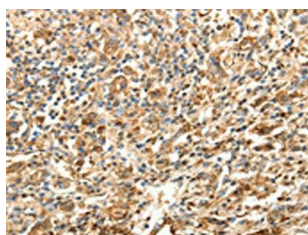
Immunogen:

Fusion protein of human SLC25A11.

Storage:

-20° C, pH7.4 PBS, 0.05% NaN₃, 40% Glycerol

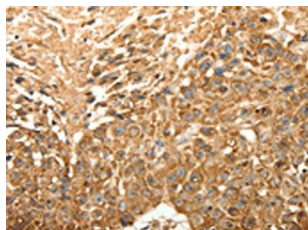
Product Images



The image on the left is immunohistochemistry of paraffin-embedded Human gastric cancer tissue using PACO14999(SLC25A11 Antibody) at dilution 1/30, on the right is treated with fusion protein. (Original magnification: x—200).



Gel: 12%SDS-PAGE, Lysate: 40 μ g, Lane: Human lymphoma tissue, Primary antibody: PACO14999(SLC25A11 Antibody) at dilution 1/600, Secondary antibody: Goat anti rabbit IgG at 1/8000 dilution, Exposure time: 20 seconds.



The image on the left is immunohistochemistry of paraffin-embedded Human esophagus cancer tissue using PACO14999(SLC25A11 Antibody) at dilution 1/30, on the right is treated with fusion protein. (Original magnification: x—200).