

Product Information

Size:

50ul

Reactivity:

Human, Mouse

Source:

Rabbit

Isotype:

IgG

Applications:

ELISA, IHC

Recommended dilutions:

ELISA:1:2000-1:5000, IHC:1:25-1:100

Protein Background:

Sperm-associated antigen 5 is a protein that in humans is encoded by the SPAG5 gene. This gene encodes a protein associated with the mitotic spindle apparatus. The encoded protein may be involved in the functional and dynamic regulation of mitotic spindles. Essential component of the mitotic spindle required for normal chromosome segregation and progression into anaphase. Required for chromosome alignment, normal timing of sister chromatid segregation, and maintenance of spindle pole architecture. The astrin (SPAG5)-kinastrin (SKAP) complex promotes stable microtubule-kinetochore attachments.

Gene ID:

SPAG5

Uniprot

Q96R06

Synonyms:

sperm associated antigen 5

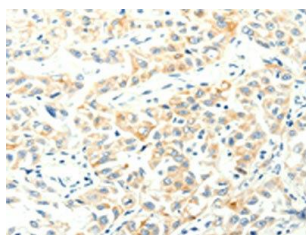
Immunogen:

Fusion protein of human SPAG5.

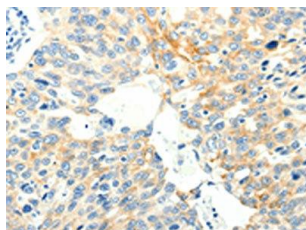
Storage:

-20° C, pH7.4 PBS, 0.05% NaN3, 40% Glycerol

Product Images



The image on the left is immunohistochemistry of paraffin-embedded Human lung cancer tissue using PACO15030(SPAG5 Antibody) at dilution 1/35, on the right is treated with fusion protein. (Original magnification: x—200).



The image on the left is immunohistochemistry of paraffin-embedded Human ovarian cancer tissue using PACO15030(SPAG5 Antibody) at dilution 1/35, on the right is treated with fusion protein. (Original magnification: x—200).