

SPATA2L Antibody



PACO15059

Product Information

Size:

50ul

Reactivity:

Human, Mouse

Source:

Rabbit

Isotype:

IgG

Applications:

ELISA, WB, IHC

Recommended dilutions:

ELISA:1:2000-1:5000, WB:1:500-1:2000,
IHC:1:50-1:200

Protein Background:

This gene belongs to the SPATA2 family. High levels expression in pancreas.

Gene ID:

SPATA2L

Uniprot

Q8IUW3

Synonyms:

spermatogenesis associated 2-like

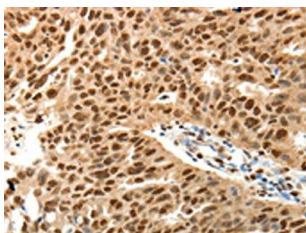
Immunogen:

Fusion protein of human SPATA2L.

Storage:

-20° C, pH7.4 PBS, 0.05% NaN₃, 40% Glycerol

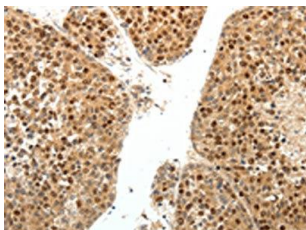
Product Images



The image on the left is immunohistochemistry of paraffin-embedded Human ovarian cancer tissue using PACO15059(SPATA2L Antibody) at dilution 1/30, on the right is treated with fusion protein. (Original magnification: x—200).



Gel: 10%SDS-PAGE, Lysate: 40 μ g, Lane: MCF7 cells, Primary antibody: PACO15059(SPATA2L Antibody) at dilution 1/500, Secondary antibody: Goat anti rabbit IgG at 1/8000 dilution, Exposure time: 30 seconds.



The image on the left is immunohistochemistry of paraffin-embedded Human liver cancer tissue using PACO15059(SPATA2L Antibody) at dilution 1/30, on the right is treated with fusion protein. (Original magnification: x—200).