

# SPATA2L Antibody



PACO15060

---

## Product Information

**Size:**

50ul

**Reactivity:**

Human, Mouse

**Source:**

Rabbit

**Isotype:**

IgG

**Applications:**

ELISA, WB, IHC

**Recommended dilutions:**

ELISA:1:2000-1:5000, WB:1:200-1:1000,  
IHC:1:50-1:200

**Protein Background:**

This gene belongs to the SPATA2 family. High levels expression in pancreas.

**Gene ID:**

SPATA2L

**Uniprot**

Q8IUW3

**Synonyms:**

spermatogenesis associated 2-like

**Immunogen:**

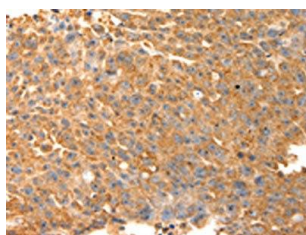
Fusion protein of human SPATA2L.

**Storage:**

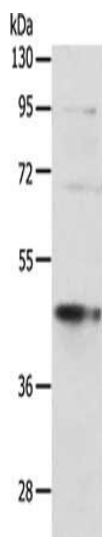
-20&deg; C, pH7.4 PBS, 0.05% NaN<sub>3</sub>, 40% Glycerol

## Product Images

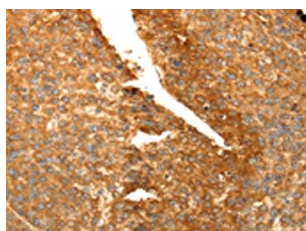
---



The image on the left is immunohistochemistry of paraffin-embedded Human ovarian cancer tissue using PACO15060(SPATA2L Antibody) at dilution 1/30, on the right is treated with fusion protein. (Original magnification: x—200).



Gel: 10%SDS-PAGE, Lysate: 40 &mu; g, Lane: MCF7 cells, Primary antibody: PACO15060(SPATA2L Antibody) at dilution 1/500, Secondary antibody: Goat anti rabbit IgG at 1/8000 dilution, Exposure time: 40 seconds.



The image on the left is immunohistochemistry of paraffin-embedded Human liver cancer tissue using PACO15060(SPATA2L Antibody) at dilution 1/30, on the right is treated with fusion protein. (Original magnification: x—200).