

PACO15197

Product Information

Size:

50ul

Reactivity:

Human

Source:

Rabbit

Isotype:

IgG

Applications:

ELISA, WB, IHC

Recommended dilutions:

ELISA:1:2000-1:10000, WB:1:1000-1:5000,
IHC:1:50-1:200

Protein Background:

The protein encoded by this gene is a member of the serpin family of proteins, a group of proteins that inhibit serine proteases. This gene is one in a cluster of serpin genes located on the q arm of chromosome 14. This family member is a glycoprotein that can inhibit several serine proteases, including protein C and various plasminogen activators and kallikreins, and it thus plays diverse roles in hemostasis and thrombosis in multiple organs.

Gene ID:

SERPINA5

Uniprot

P05154

Synonyms:

Serpin peptidase inhibitor, clade A (alpha-1 antiproteinase, antitrypsin), member 5

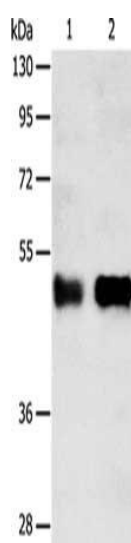
Immunogen:

Fusion protein of human SERPINA5.

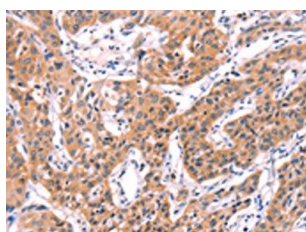
Storage:

-20° C, pH7.4 PBS, 0.05% NaN₃, 40% Glycerol

Product Images



Gel: 10%SDS-PAGE, Lysate: 40 μ g, Lane 1-2: Human liver cancer tissue, A549 cells, Primary antibody: PACO15197(SERPINA5 Antibody) at dilution 1/750, Secondary antibody: Goat anti rabbit IgG at 1/8000 dilution, Exposure time: 10 minutes.



The image on the left is immunohistochemistry of paraffin-embedded Human lung cancer tissue using PACO15197(SERPINA5 Antibody) at dilution 1/40, on the right is treated with fusion protein. (Original magnification: x—200).