

---

## Product Information

**Size:**

50ul

**Reactivity:**

Human

**Source:**

Rabbit

**Isotype:**

IgG

**Applications:**

ELISA, WB, IHC

**Recommended dilutions:**

ELISA:1:1000-1:2000, WB:1:200-1:1000,  
IHC:1:10-1:50

**Protein Background:**

This gene encodes a protein related to the cytoskeletal protein beta-actin. This protein is a major component of the calyx in the perinuclear theca of mammalian sperm heads, and it therefore likely functions in spermatid formation. This gene is intronless and is similar to a related gene located on chromosome 1. A related pseudogene has also been identified approximately 75 kb downstream of this gene on chromosome X.

**Gene ID:**

ACTRT1

**Uniprot**

Q8TDG2

**Synonyms:**

Actin-related protein T1

**Immunogen:**

Fusion protein of human ACTRT1.

**Storage:**

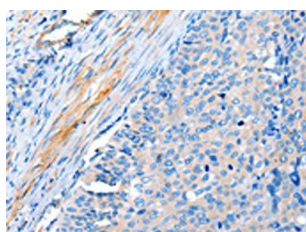
-20&deg; C, pH7.4 PBS, 0.05% NaN3, 40% Glycerol

## Product Images

---



Gel: 10%SDS-PAGE, Lysate: 40 &mu; g, Lane: Human lymphoma tissue, Primary antibody: PACO15289(ACTRT1 Antibody) at dilution 1/350, Secondary antibody: Goat anti rabbit IgG at 1/8000 dilution, Exposure time: 5 seconds.



The image on the left is immunohistochemistry of paraffin-embedded Human cervical cancer tissue using PACO15289(ACTRT1 Antibody) at dilution 1/15, on the right is treated with fusion protein. (Original magnification: x—200).