

ADAMDEC1 Antibody



PACO15318

Product Information

Size:

50ul

Reactivity:

Human

Source:

Rabbit

Isotype:

IgG

Applications:

ELISA, IHC

Recommended dilutions:

ELISA:1:2000-1:5000, IHC:1:25-1:100

Protein Background:

This encoded protein is thought to be a secreted protein belonging to the disintegrin metalloproteinase family. Its expression is upregulated during dendritic cells maturation. This protein may play an important role in dendritic cell function and their interactions with germinal center T cells.

Gene ID:

ADAMDEC1

Uniprot

O15204

Synonyms:

ADAM-like, decysin 1

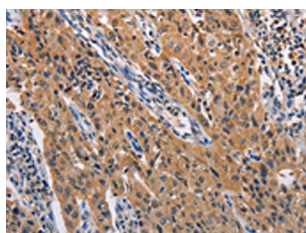
Immunogen:

Fusion protein of human ADAMDEC1.

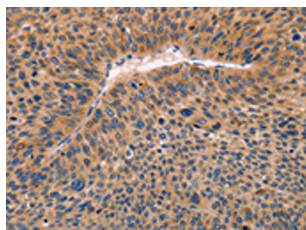
Storage:

-20° C, pH7.4 PBS, 0.05% NaN₃, 40% Glycerol

Product Images



The image on the left is immunohistochemistry of paraffin-embedded Human lung cancer tissue using PACO15318(ADAMDEC1 Antibody) at dilution 1/20, on the right is treated with fusion protein. (Original magnification: x—200).



The image on the left is immunohistochemistry of paraffin-embedded Human liver cancer tissue using PACO15318(ADAMDEC1 Antibody) at dilution 1/20, on the right is treated with fusion protein. (Original magnification: x—200).