

PACO15344

Product Information

Size:

50ul

Reactivity:

Human, Mouse

Source:

Rabbit

Isotype:

IgG

Applications:

ELISA, IHC

Recommended dilutions:

ELISA:1:2000-1:5000, IHC:1:25-1:100

Protein Background:

CCP3 (cytosolic carboxypeptidase 3), also known as AGBL3 (ATP/GTP-binding protein-like 3), is a 1,001 amino acid, cytosolic protein that exists as four alternatively spliced isoforms and belongs to the peptidase M14 family. As a metallo-carboxypeptidase, CCP3 binds one zinc ion per subunit and may play a role in the processing of tubulin. The gene that encodes CCP3 consists of approximately 161,457 bases and maps to human chromosome 7q33. Housing over 1,000 genes, chromosome 7 comprises nearly 5% of the human genome. Chromosome 7 has been linked to Osteogenesis imperfecta, Pendred syndrome, Lissencephaly, Citrullinemia and Shwachman-Diamond syndrome.

Gene ID:

AGBL3

Uniprot

Q8NEM8

Synonyms:

ATP/GTP binding protein-like 3

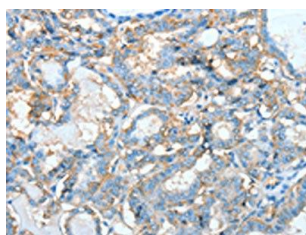
Immunogen:

Fusion protein of human AGBL3.

Storage:

-20°C, pH7.4 PBS, 0.05% NaN₃, 40% Glycerol

Product Images



The image on the left is immunohistochemistry of paraffin-embedded Human thyroid cancer tissue using PACO15344(AGBL3 Antibody) at dilution 1/45, on the right is treated with fusion protein. (Original magnification: x—200).