

PACO15345

---

## Product Information

**Size:**

50ul

**Reactivity:**

Human, Mouse

**Source:**

Rabbit

**Isotype:**

IgG

**Applications:**

ELISA, WB, IHC

**Recommended dilutions:**

ELISA:1:1000-1:2000, WB:1:200-1:1000,  
IHC:1:25-1:100

**Protein Background:**

This protein belongs to the peptidase M14 family. It has a function in the processing of cytosolic proteins such as alpha-tubulin, which is known to be modified by the removal of a C-terminal tyrosine. Every subunit binds 1 zinc ion. It has high levels expression in digestive and blood/hematopoietic system, like intestine, urinary, kidney and bone marrow.

**Gene ID:**

AGBL3

**Uniprot**

Q8NEM8

**Synonyms:**

ATP/GTP binding protein-like 3

**Immunogen:**

Fusion protein of human AGBL3.

**Storage:**

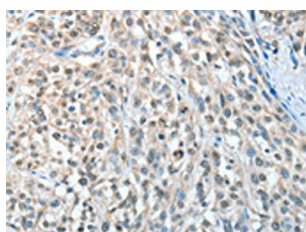
-20°C; C, pH7.4 PBS, 0.05% NaN<sub>3</sub>, 40% Glycerol

## Product Images

---



Gel: 8+12%SDS-PAGE, Lysate: 40  $\mu$ g, Lane: Mouse pancreas tissue, Primary antibody: PACO15345(AGBL3 Antibody) at dilution 1/250, Secondary antibody: Goat anti rabbit IgG at 1/8000 dilution, Exposure time: 20 seconds.



The image on the left is immunohistochemistry of paraffin-embedded Human esophagus cancer tissue using PACO15345(AGBL3 Antibody) at dilution 1/25, on the right is treated with fusion protein. (Original magnification: x—200).