

AGFG1 Antibody



PACO15347

Product Information

Size:

50ul

Reactivity:

Human, Mouse, Rat

Source:

Rabbit

Isotype:

IgG

Applications:

ELISA, WB, IHC

Recommended dilutions:

ELISA:1:2000-1:5000, WB:1:500-1:2000,
IHC:1:50-1:200

Protein Background:

The protein encoded by this gene is related to nucleoporins, a class of proteins that mediate nucleocytoplasmic transport. The encoded protein binds the activation domain of the human immunodeficiency virus Rev protein when Rev is assembled onto its RNA target, and is required for the nuclear export of Rev-directed RNAs. Multiple transcript variants encoding different isoforms have been found for this gene.

Gene ID:

AGFG1

Uniprot

P52594

Synonyms:

ArfGAP with FG repeats 1

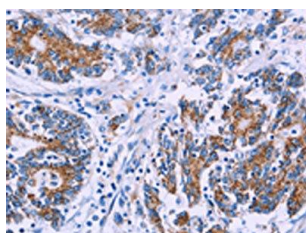
Immunogen:

Fusion protein of human AGFG1.

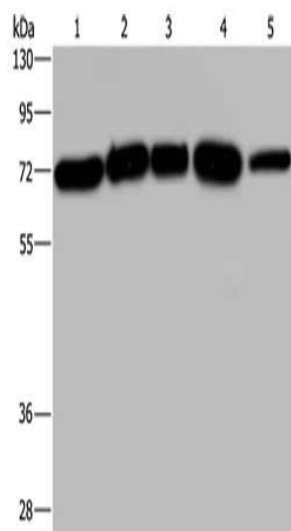
Storage:

-20° C, pH7.4 PBS, 0.05% NaN₃, 40% Glycerol

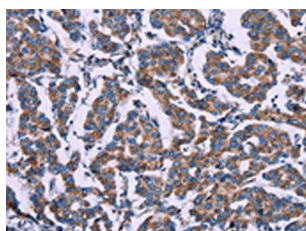
Product Images



The image on the left is immunohistochemistry of paraffin-embedded Human colon cancer tissue using PACO15347(AGFG1 Antibody) at dilution 1/50, on the right is treated with fusion protein. (Original magnification: x—200).



Gel: 8%SDS-PAGE, Lysate: 40 μ g, Lane 1-5: A172 cells, Hela cells, 293T cells, K562 cells, human testis tissue, Primary antibody: PACO15347(AGFG1 Antibody) at dilution 1/533, Secondary antibody: Goat anti rabbit IgG at 1/8000 dilution, Exposure time: 40 seconds.



The image on the left is immunohistochemistry of paraffin-embedded Human breast cancer tissue using PACO15347(AGFG1 Antibody) at dilution 1/50, on the right is treated with fusion protein. (Original magnification: x—200).