

PACO15394

---

## Product Information

**Size:**

50ul

**Reactivity:**

Human

**Source:**

Rabbit

**Isotype:**

IgG

**Applications:**

ELISA, WB, IHC

**Recommended dilutions:**

ELISA:1:1000-1:2000, WB:1:200-1:1000,  
IHC:1:15-1:50

**Protein Background:**

This gene encodes a key acute phase plasma protein. Because of its increase due to acute inflammation, this protein is classified as an acute-phase reactant. The specific function of this protein has not yet been determined; however, it may be involved in aspects of immunosuppression.

**Gene ID:**

ORM1

**Uniprot**

P02763

**Synonyms:**

orosomuroid 1

**Immunogen:**

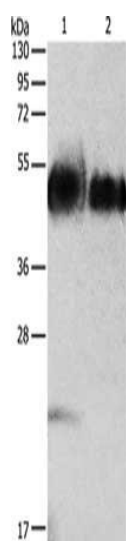
Fusion protein of human ORM1.

**Storage:**

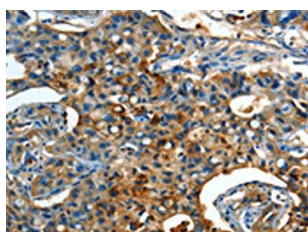
-20&deg; C, pH7.4 PBS, 0.05% NaN<sub>3</sub>, 40% Glycerol

## Product Images

---



Gel: 12%SDS-PAGE, Lysate: 40  $\mu$ g, Lane 1-2: Human testis tissue, Human prostate tissue, Primary antibody: PACO15394(ORM1 Antibody) at dilution 1/160, Secondary antibody: Goat anti rabbit IgG at 1/8000 dilution, Exposure time: 2 minutes.



The image on the left is immunohistochemistry of paraffin-embedded Human lung cancer tissue using PACO15394(ORM1 Antibody) at dilution 1/15, on the right is treated with fusion protein. (Original magnification: x—200).