

PACO15413

Product Information

Size:

50ul

Reactivity:

Human

Source:

Rabbit

Isotype:

IgG

Applications:

ELISA, WB

Recommended dilutions:

ELISA:1:1000-1:2000, WB:1:200-1:1000

Protein Background:

CARF (calcium-response factor), also known as ALS2CR8 (amyotrophic lateral sclerosis 2 chromosomal region candidate gene 8 protein) or NYD-SP24, is a 725 amino acid, nuclear protein. Expressed in a wide variety of tissues with highest expression in the hippocampus, CARF is thought to be a transcription factor that associates with the p53 tumor suppression pathway. CARF cooperates, co-localizes and is co-regulated with ARF, an ADP-ribosylation factor, and, through this interaction, helps to mediate ARF-p53-induced apoptotic signaling. This apoptotic pathway is implicated in cell cycle control, proper cellular development, response to DNA damage and the aging process, suggesting that CARF participates in various events throughout the cell.

Gene ID:

CARF

Uniprot

Q8N187

Synonyms:

calcium responsive transcription factor

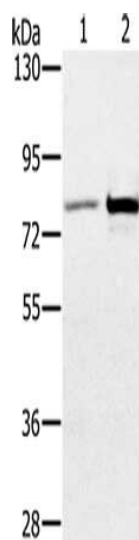
Immunogen:

Fusion protein of human CARF.

Storage:

-20° C, pH7.4 PBS, 0.05% NaN3, 40% Glycerol

Product Images



Gel: 6%SDS-PAGE, Lysate: 40 μ g, Lane 1-2: Human testis tissue, K562 cells, Primary antibody: PACO15413(CARF Antibody) at dilution 1/300, Secondary antibody: Goat anti rabbit IgG at 1/8000 dilution, Exposure time: 2 minutes.