
Product Information

Size:

50ul

Reactivity:

Human, Mouse

Source:

Rabbit

Isotype:

IgG

Applications:

ELISA, IHC

Recommended dilutions:

ELISA:1:1000-1:2000, IHC:1:25-1:100

Protein Background:

Anillin, also known as scraps homolog, is an evolutionarily conserved Actin- binding protein required for cytokinesis that was first identified in *Drosophila melanogaster*. Anillin is a ubiquitously expressed protein with highest expression levels in the central nervous system. It is predominantly found in the nucleus and it localizes to the cleavage furrow during cytokinesis, forming a ring with the help of Rac GTPase. During cytokinesis, Anillin interacts with CD2AP and functions to concentrate Rho A and maintain the localization of active Myosin. In Anillin knockout cells the cleavage furrow fails to complete ingression. Anillin expression levels fluctuate with the cell cycle, peaking in mitosis.

Gene ID:

ANLN

Uniprot

Q9NQW6

Synonyms:

anillin, actin binding protein

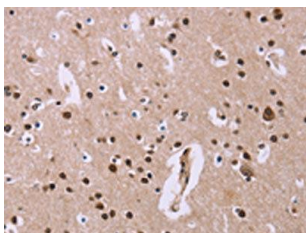
Immunogen:

Fusion protein of human ANLN.

Storage:

-20°C, pH7.4 PBS, 0.05% NaN₃, 40% Glycerol

Product Images



The image on the left is immunohistochemistry of paraffin-embedded Human brain tissue using PACO15440(ANLN Antibody) at dilution 1/20, on the right is treated with fusion protein. (Original magnification: x—200).