

# AP2S1 Antibody



PACO15456

---

## Product Information

**Size:**

50ul

**Reactivity:**

Human, Mouse, Rat

**Source:**

Rabbit

**Isotype:**

IgG

**Applications:**

ELISA, IHC

**Recommended dilutions:**

ELISA:1:2000-1:5000, IHC:1:25-1:100

**Protein Background:**

One of two major clathrin-associated adaptor complexes, AP-2, is a heterotetramer which is associated with the plasma membrane. This complex is composed of two large chains, a medium chain, and a small chain. This gene encodes the small chain of this complex. Alternative splicing has been observed in this gene and results in two known transcripts.

**Gene ID:**

AP2S1

**Uniprot**

P53680

**Synonyms:**

adaptor-related protein complex 2, sigma 1 subunit

**Immunogen:**

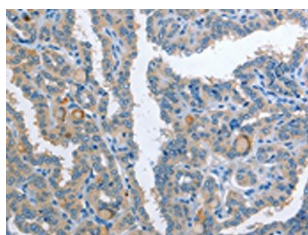
Fusion protein of human AP2S1.

**Storage:**

-20&deg; C, pH7.4 PBS, 0.05% NaN<sub>3</sub>, 40% Glycerol

## Product Images

---



The image on the left is immunohistochemistry of paraffin-embedded Human thyroid cancer tissue using PACO15456(AP2S1 Antibody) at dilution 1/25, on the right is treated with fusion protein. (Original magnification: x—200).