

PACO15465

Product Information

Size:

50ul

Reactivity:

Human, Mouse

Source:

Rabbit

Isotype:

IgG

Applications:

ELISA, WB

Recommended dilutions:

ELISA:1:2000-1:5000, WB:1:500-1:2000

Protein Background:

This gene encodes a component of the anaphase promoting complex, a large ubiquitin-protein ligase that controls cell cycle progression by regulating the degradation of cell cycle regulators such as B-type cyclins. The encoded protein is evolutionarily conserved and is required for the integrity and ubiquitin ligase activity of the anaphase promoting complex. Pseudogenes and splice variants have been found for this gene; however, the biological validity of some of the splice variants has not been determined.

Gene ID:

ANAPC13

Uniprot

Q9BS18

Synonyms:

anaphase promoting complex subunit 13

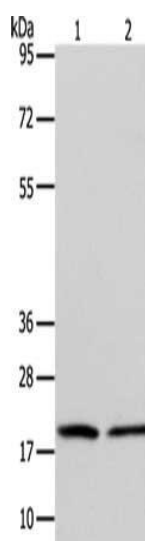
Immunogen:

Fusion protein of human ANAPC13.

Storage:

-20° C, pH7.4 PBS, 0.05% NaN3, 40% Glycerol

Product Images



Gel: 12+15%SDS-PAGE, Lysate: 40 μ g, Lane 1-2: Jurkat cells, RAW264.7 cells, Primary antibody: PACO15465(ANAPC13 Antibody) at dilution 1/600, Secondary antibody: Goat anti rabbit IgG at 1/8000 dilution, Exposure time: 1 minute.