

Product Information

Size:

50ul

Reactivity:

Human, Mouse

Source:

Rabbit

Isotype:

IgG

Applications:

ELISA, IHC

Recommended dilutions:

ELISA:1:2000-1:5000, IHC:1:50-1:200

Protein Background:

Rho GTPases play a fundamental role in numerous cellular processes that are initiated by extracellular stimuli that work through G protein coupled receptors. The encoded protein may form complex with G proteins and stimulate Rho-dependent signals. ARHGEF10 (rho guanine nucleotide exchange factor 10), also known as GEF10 or KIAA0294, is a 1,369 amino acid, protein that contains one DBL-homology domain and is thought to play a role in myelination of peripheral nerves, specifically during development. ARHGEF10 is expressed as four alternatively spliced isoforms that are present at low levels in ovary, lung, testis and kidney, with considerably higher expression in the central and peripheral nervous systems.

Gene ID:

ARHGEF10

Uniprot

O15013

Synonyms:

Rho guanine nucleotide exchange factor (GEF) 10

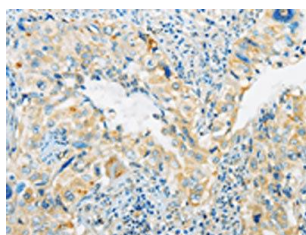
Immunogen:

Fusion protein of human ARHGEF10.

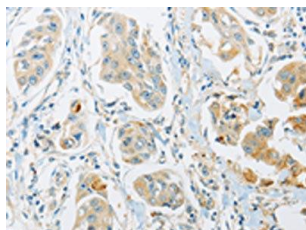
Storage:

-20° C, pH7.4 PBS, 0.05% NaN₃, 40% Glycerol

Product Images



The image on the left is immunohistochemistry of paraffin-embedded Human cervical cancer tissue using PACO15513(ARHGEF10 Antibody) at dilution 1/45, on the right is treated with fusion protein. (Original magnification: x—200).



The image on the left is immunohistochemistry of paraffin-embedded Human breast cancer tissue using PACO15513(ARHGEF10 Antibody) at dilution 1/45, on the right is treated with fusion protein. (Original magnification: x—200).