

Product Information

Size:

50ul

Reactivity:

Human, Mouse

Source:

Rabbit

Isotype:

IgG

Applications:

ELISA, WB, IHC

Recommended dilutions:

ELISA:1:1000-1:2000, WB:1:200-1:1000,
IHC:1:25-1:100

Protein Background:

Ubiquitin carboxyl-terminal hydrolase isozyme L5 is an enzyme that in humans is encoded by the UCHL5 gene. Protease that specifically cleaves 'Lys-48'-linked polyubiquitin chains. Deubiquitinating enzyme associated with the 19S regulatory subunit of the 26S proteasome. Putative regulatory component of the INO80 complex; however is inactive in the INO80 complex and is activated by a transient interaction of the INO80 complex with the proteasome via ADRM1.

Gene ID:

UCHL5

Uniprot

Q9Y5K5

Synonyms:

ubiquitin carboxyl-terminal hydrolase L5

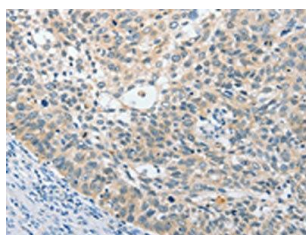
Immunogen:

Fusion protein of human UCHL5.

Storage:

-20°C; C, pH7.4 PBS, 0.05% NaN₃, 40% Glycerol

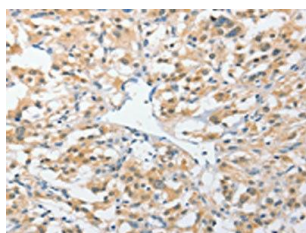
Product Images



The image on the left is immunohistochemistry of paraffin-embedded Human cervical cancer tissue using PACO15601(UCHL5 Antibody) at dilution 1/25, on the right is treated with fusion protein. (Original magnification: x—200).



Gel: 12%SDS-PAGE, Lysate: 40 μ g, Lane 1-2: Human fetal kidney tissue, 293T cells, Primary antibody: PACO15601(UCHL5 Antibody) at dilution 1/250, Secondary antibody: Goat anti rabbit IgG at 1/8000 dilution, Exposure time: 15 seconds.



The image on the left is immunohistochemistry of paraffin-embedded Human thyroid cancer tissue using PACO15601(UCHL5 Antibody) at dilution 1/25, on the right is treated with fusion protein. (Original magnification: x—200).