

Product Information

Size:

50ul

Reactivity:

Human, Mouse

Source:

Rabbit

Isotype:

IgG

Applications:

ELISA, WB, IHC

Recommended dilutions:

ELISA:1:2000-1:5000, WB:1:500-1:2000,
IHC:1:25-1:100

Protein Background:

Epidermal growth factor receptor substrate 15-like 1 is a protein that in humans is encoded by the EPS15L1 gene. Seems to be a constitutive component of clathrin-coated pits that is required for receptor-mediated endocytosis. Involved in endocytosis of integrin beta-1 (ITGB1) and transferrin receptor (TFR); internalization of ITGB1 as DAB2-dependent cargo but not TFR seems to require association with DAB2. Interacts with EPS15, AGFG1/HRB and AGFG2/HRBL. Associates with the clathrin-associated adapter protein complex 2 (AP-2) By similarity. Interacts with FCHO1. Interacts with FCHO2. Interacts (via EH domains) with DAB2.

Gene ID:

EPS15L1

Uniprot

Q9UBC2

Synonyms:

epidermal growth factor receptor pathway substrate 15-like 1

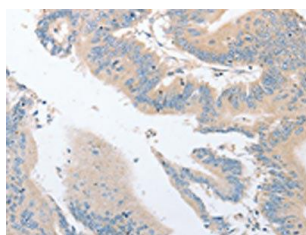
Immunogen:

Fusion protein of human EPS15L1.

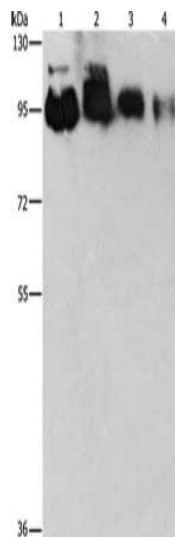
Storage:

-20° C, pH7.4 PBS, 0.05% NaN3, 40% Glycerol

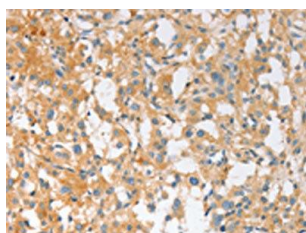
Product Images



The image on the left is immunohistochemistry of paraffin-embedded Human colon cancer tissue using PACO15605(EPS15L1 Antibody) at dilution 1/30, on the right is treated with fusion protein. (Original magnification: x—200).



Gel: 8%SDS-PAGE, Lysate: 40 μ g, Lane 1-4: HeLa cells, PC3 cells, 231 cells, 293T cells, Primary antibody: PACO15605(EPS15L1 Antibody) at dilution 1/350, Secondary antibody: Goat anti rabbit IgG at 1/8000 dilution, Exposure time: 30 seconds.



The image on the left is immunohistochemistry of paraffin-embedded Human thyroid cancer tissue using PACO15605(EPS15L1 Antibody) at dilution 1/30, on the right is treated with fusion protein. (Original magnification: x—200).