

Product Information

Size:

50ul

Reactivity:

Human, Mouse

Source:

Rabbit

Isotype:

IgG

Applications:

ELISA, WB, IHC

Recommended dilutions:

ELISA:1:2000-1:5000, WB:1:500-1:2000,
IHC:1:25-1:100

Protein Background:

The protein encoded by this gene was identified by its interaction with the catalytic domain of protein kinase C-zeta. The encoded protein contains an actin-binding site and an ATP-binding site. It is most closely related to twinfilin (PTK9), a conserved actin monomer-binding protein.

Gene ID:

TWF2

Uniprot

Q6IBS0

Synonyms:

twinfilin actin-binding protein 2

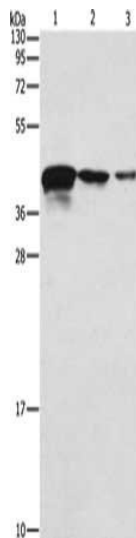
Immunogen:

Fusion protein of human TWF2.

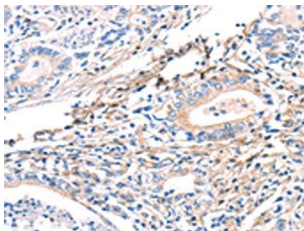
Storage:

-20° C, pH7.4 PBS, 0.05% NaN₃, 40% Glycerol

Product Images



Gel: 10%SDS-PAGE, Lysate: 40 μ g, Lane 1-3: Human endometrial carcinoma tissue, A172 cells, U937 cells, Primary antibody: PACO15659(TWF2 Antibody) at dilution 1/800, Secondary antibody: Goat anti rabbit IgG at 1/8000 dilution, Exposure time: 20 seconds.



The image on the left is immunohistochemistry of paraffin-embedded Human gastric cancer tissue using PACO15659(TWF2 Antibody) at dilution 1/40, on the right is treated with fusion protein. (Original magnification: x—200).