

PACO15677

Product Information

Size:

50ul

Reactivity:

Human, Mouse, Rat

Source:

Rabbit

Isotype:

IgG

Applications:

ELISA, WB, IHC

Recommended dilutions:

ELISA:1:2000-1:5000, WB:1:500-1:2000,
IHC:1:25-1:100

Protein Background:

This gene encodes a mitochondrial protein that catalyzes the attachment of tyrosine to tRNA(Tyr). Mutations in this gene are associated with myopathy with lactic acid, sis and sideroblastic anemia type 2 (MLASA2).

Gene ID:

YARS2

Uniprot

Q9Y2Z4

Synonyms:

tyrosyl-tRNA synthetase 2, mitochondrial

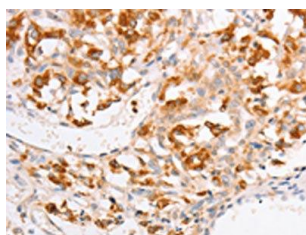
Immunogen:

Fusion protein of human YARS2.

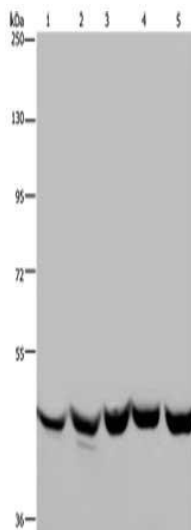
Storage:

-20°C; C, pH7.4 PBS, 0.05% NaN₃, 40% Glycerol

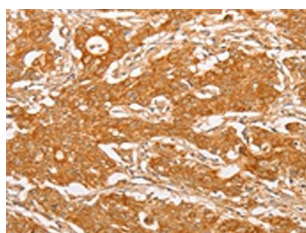
Product Images



The image on the left is immunohistochemistry of paraffin-embedded Human thyroid cancer tissue using PACO15677(YARS2 Antibody) at dilution 1/20, on the right is treated with fusion protein. (Original magnification: x—200).



Gel: 6%SDS-PAGE, Lysate: 40 μ g, Lane 1-5: NIH/3T3 cells, A172 cells, HepG2 cells, K562 cells, Hela cells, Primary antibody: PACO15677(YARS2 Antibody) at dilution 1/250, Secondary antibody: Goat anti rabbit IgG at 1/8000 dilution, Exposure time: 30 seconds.



The image on the left is immunohistochemistry of paraffin-embedded Human gastric cancer tissue using PACO15677(YARS2 Antibody) at dilution 1/20, on the right is treated with fusion protein. (Original magnification: x—200).