

Product Information

Size:

50ul

Reactivity:

Human, Mouse

Source:

Rabbit

Isotype:

IgG

Applications:

ELISA, WB

Recommended dilutions:

ELISA:1:2000-1:5000, WB:1:500-1:2000

Protein Background:

This gene encodes a serine/threonine-protein kinase that is involved in mitotic regulation. This protein is localized to the centrosome, and undetectable during G1 phase, but accumulates progressively throughout the S phase, reaching maximal levels in late G2 phase. Alternatively spliced transcript variants encoding different isoforms with distinct C-termini have been noted for this gene.

Gene ID:

NEK2

Uniprot

P51955

Synonyms:

NIMA-related kinase 2

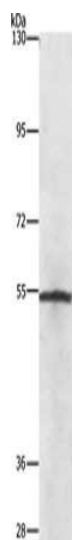
Immunogen:

Fusion protein of human NEK2.

Storage:

-20° C, pH7.4 PBS, 0.05% NaN3, 40% Glycerol

Product Images



Gel: 8%SDS-PAGE, Lysate: 40 μ g, Lane: Lovo cells, Primary antibody: PACO15695(NEK2 Antibody) at dilution 1/727, Secondary antibody: Goat anti rabbit IgG at 1/8000 dilution, Exposure time: 1 minute.