

Product Information

Size:

50ul

Reactivity:

Human, Rat

Source:

Rabbit

Isotype:

IgG

Applications:

ELISA, IHC

Recommended dilutions:

ELISA:1:2000-1:5000, IHC:1:50-1:200

Protein Background:

One member of the STAT family, Stat3, participates in a wide range of biological processes including nephrogenesis, gliogenesis, hepatogenesis, T cell proliferation, inflammation and oncogenesis. Many of these responses are triggered by the IL-6 family of cytokines, which transduce their vital signals through a common gp130 receptor chain. A novel Stat3-Interacting Protein, StIP1, contains 12 WD40 repeats, which mediate protein-protein interactions. StIP1 exhibits an affinity for members of the JNK family and may play a specific role in regulating Stat3 activation. Overexpression of StIP1 blocks Stat3 activation, nuclear translocation and Stat3-dependent induction of a reporter gene, suggesting that StIP1 regulates the ligand-dependent activation of Stat3, probably by serving as a scaffold protein that promotes the interaction between JNK and the Stat3 substrate.

Gene ID:

ELP2

Uniprot

Q6IA86

Synonyms:

elongator acetyltransferase complex subunit 2

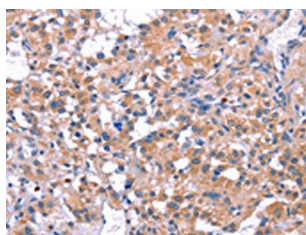
Immunogen:

Fusion protein of human ELP2.

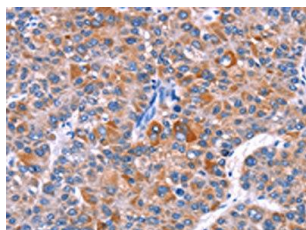
Storage:

-20° C, pH7.4 PBS, 0.05% NaN₃, 40% Glycerol

Product Images



The image on the left is immunohistochemistry of paraffin-embedded Human thyroid cancer tissue using PACO15736(ELP2 Antibody) at dilution 1/40, on the right is treated with fusion protein. (Original magnification: x—200).



The image on the left is immunohistochemistry of paraffin-embedded Human liver cancer tissue using PACO15736(ELP2 Antibody) at dilution 1/40, on the right is treated with fusion protein. (Original magnification: x—200).