

PACO15801

Product Information

Size:

50ul

Reactivity:

Human

Source:

Rabbit

Isotype:

IgG

Applications:

ELISA, IHC

Recommended dilutions:

ELISA:1:2000-1:5000, IHC:1:50-1:200

Protein Background:

A target of NESH-SH3/Abi3bp (TARSH) was originally identified as an SH3 domain-binding molecule of the NESH-SH3/Abi3 protein that is involved in Rac-dependent actin polymerization. In recent studies, TARSH gene expression was dramatically induced in mouse embryonic fibroblasts (MEFs) replicative senescence and suppressed in human lung carcinoma specimens and thyroid carcinomas. However, the molecular mechanism underlying the regulation of TARSH in tumorigenesis remains unclear.

Gene ID:

ABI3BP

Uniprot

Q7Z7G0

Synonyms:

ABI family, member 3 (NESH) binding protein

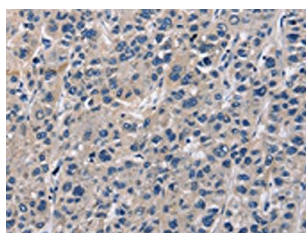
Immunogen:

Fusion protein of human ABI3BP.

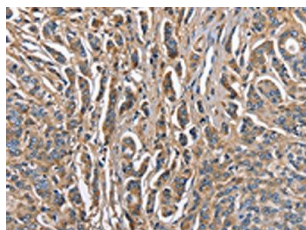
Storage:

-20° C, pH7.4 PBS, 0.05% NaN₃, 40% Glycerol

Product Images



The image on the left is immunohistochemistry of paraffin-embedded Human liver cancer tissue using PACO15801(ABI3BP Antibody) at dilution 1/60, on the right is treated with fusion protein. (Original magnification: x—200).



The image on the left is immunohistochemistry of paraffin-embedded Human prostate cancer tissue using PACO15801(ABI3BP Antibody) at dilution 1/60, on the right is treated with fusion protein. (Original magnification: x—200).