

BCAT1 Antibody



PACO15853

Product Information

Size:

50ul

Reactivity:

Human, Mouse

Source:

Rabbit

Isotype:

IgG

Applications:

ELISA, IHC

Recommended dilutions:

ELISA:1:1000-1:5000, IHC:1:50-1:200

Protein Background:

This gene encodes the cytosolic form of the enzyme branched-chain amino acid, transaminase. This enzyme catalyzes the reversible transamination of branched-chain alpha-keto acid, to branched-chain L-amino acid, essential for cell growth. Two different clinical disorders have been attributed to a defect of branched-chain amino acid, transamination: hypervalinemia and hyperleucine-isoleucinemia. As there is also a gene encoding a mitochondrial form of this enzyme, mutations in either gene may contribute to these disorders. Alternatively spliced transcript variants have been described.

Gene ID:

BCAT1

Uniprot

P54687

Synonyms:

branched chain amino-acid, transaminase 1, cytosolic

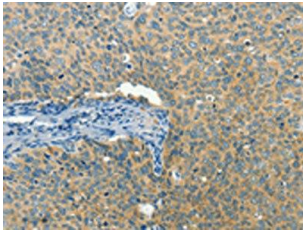
Immunogen:

Fusion protein of human BCAT1.

Storage:

-20° C, pH7.4 PBS, 0.05% NaN₃, 40% Glycerol

Product Images



The image on the left is immunohistochemistry of paraffin-embedded Human cervical cancer tissue using PACO15853(BCAT1 Antibody) at dilution 1/50, on the right is treated with fusion protein. (Original magnification: x—200).