

### Product Information

**Size:**

50ul

**Reactivity:**

Human, Mouse

**Source:**

Rabbit

**Isotype:**

IgG

**Applications:**

ELISA, WB, IHC

**Recommended dilutions:**

ELISA:1:2000-1:5000, WB:1:500-1:2000,  
IHC:1:25-1:100

**Protein Background:**

This gene encodes a protein involved in regulation of the cell cycle through interactions with several cyclin-dependent kinases. One study (PMID: 16177568) reported aberrant splicing of transcripts from this gene which results in removal of the cyclin binding domain only in human cancer cells, and reduction in gene expression was shown in colorectal cancers (PMID: 17982127). Multiple transcript variants encoding different isoforms have been found for this gene.

**Gene ID:**

CABLES1

**Uniprot**

Q8TDN4

**Synonyms:**

Cdk5 and Abl enzyme substrate 1

**Immunogen:**

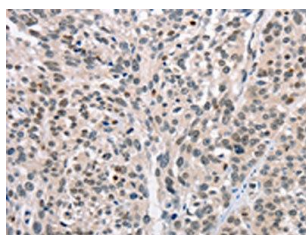
Fusion protein of human CABLES1.

**Storage:**

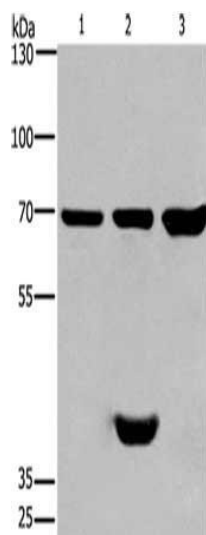
-20&deg; C, pH7.4 PBS, 0.05% NaN3, 40% Glycerol

## Product Images

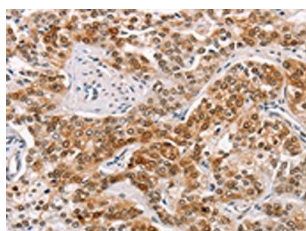
---



The image on the left is immunohistochemistry of paraffin-embedded Human esophagus cancer tissue using PACO15901(CABLES1 Antibody) at dilution 1/15, on the right is treated with fusion protein. (Original magnification: x—200).



Gel: 6%SDS-PAGE, Lysate: 40 &mu; g, Lane 1-3: Mouse brain tissue, Mouse heart tissue, mouse liver tissue, Primary antibody: PACO15901(CABLES1 Antibody) at dilution 1/350, Secondary antibody: Goat anti rabbit IgG at 1/8000 dilution, Exposure time: 1 minute.



The image on the left is immunohistochemistry of paraffin-embedded Human prostate cancer tissue using PACO15901(CABLES1 Antibody) at dilution 1/15, on the right is treated with fusion protein. (Original magnification: x—200).