

PACO15903

Product Information

Size:

50ul

Reactivity:

Human, Mouse, Rat

Source:

Rabbit

Isotype:

IgG

Applications:

ELISA, IHC

Recommended dilutions:

ELISA:1:2000-1:5000, IHC:1:50-1:200

Protein Background:

Cell adhesion molecule 3 is a protein that in humans is encoded by the CADM3 gene. IGSF4B is a brain-specific protein related to the calcium-independent cell-cell adhesion molecules known as nectins. Involved in the cell-cell adhesion. Has both calcium-independent homophilic cell-cell adhesion activity and calcium-independent heterophilic cell-cell adhesion activity with IGSF4, PVRL1 and PVRL3. Interaction with EPB41L1 may regulate structure or function of cell-cell junctions.

Gene ID:

CADM3

Uniprot

Q8N126

Synonyms:

cell adhesion molecule 3

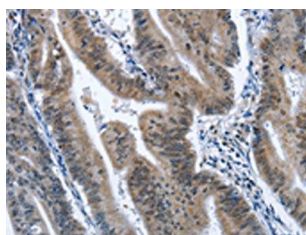
Immunogen:

Fusion protein of human CADM3.

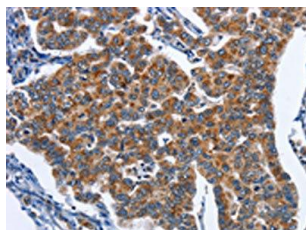
Storage:

-20° C, pH7.4 PBS, 0.05% NaN₃, 40% Glycerol

Product Images



The image on the left is immunohistochemistry of paraffin-embedded Human colon cancer tissue using PACO15903(CADM3 Antibody) at dilution 1/40, on the right is treated with fusion protein. (Original magnification: x—200).



The image on the left is immunohistochemistry of paraffin-embedded Human breast cancer tissue using PACO15903(CADM3 Antibody) at dilution 1/40, on the right is treated with fusion protein. (Original magnification: x—200).