

PACO15912

Product Information

Size:

50ul

Reactivity:

Human, Mouse, Rat

Source:

Rabbit

Isotype:

IgG

Applications:

ELISA, IHC

Recommended dilutions:

ELISA:1:2000-1:10000, IHC:1:100-1:300

Protein Background:

The product of this gene is a calcium-binding protein localized in the endoplasmic reticulum (ER) and it is involved in such ER functions as protein folding and sorting. This protein belongs to a family of multiple EF-hand proteins (CERC) that include reticulocalbin, ERC-55, and Cab45 and the product of this gene. Alternatively spliced transcript variants encoding different isoforms have been identified.

Gene ID:

CALU

Uniprot

O43852

Synonyms:

calumenin

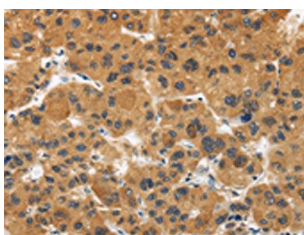
Immunogen:

Fusion protein of human CALU.

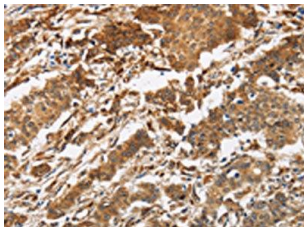
Storage:

-20° C, pH7.4 PBS, 0.05% NaN₃, 40% Glycerol

Product Images



The image is immunohistochemistry of paraffin-embedded Human liver cancer tissue using PACO15912(CALU Antibody) at dilution 1/40. (Original magnification: x—200).



The image is immunohistochemistry of paraffin-embedded Human gastric cancer tissue using PACO15912(CALU Antibody) at dilution 1/40. (Original magnification: x—200).