

SLAMF1 Antibody



PACO15951

Product Information

Size:

50ul

Reactivity:

Human

Source:

Rabbit

Isotype:

IgG

Applications:

ELISA, WB

Recommended dilutions:

ELISA:1:1000-1:2000, WB:1:200-1:1000

Protein Background:

High-affinity self-ligand important in bidirectional T-cell to B-cell stimulation. SLAM-induced signal-transduction events in T-lymphocytes are different from those in B-cells. Two modes of SLAM signaling are likely to exist: one in which the inhibitor SH2D1A acts as a negative regulator and another in which protein-tyrosine phosphatase 2C (PTPN11)-dependent signal transduction operates.

Gene ID:

SLAMF1

Uniprot

Q13291

Synonyms:

signaling lymphocytic activation molecule family member 1

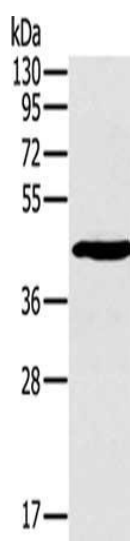
Immunogen:

Fusion protein of human SLAMF1.

Storage:

-20° C, pH7.4 PBS, 0.05% NaN3, 40% Glycerol

Product Images



Gel: 8%SDS-PAGE, Lysate: 50 μ g, Lane: Jurkat cells, Primary antibody: PACO15951(SLAMF1 Antibody) at dilution 1/200, Secondary antibody: Goat anti rabbit IgG at 1/8000 dilution, Exposure time: 1 minute.