

## Product Information

**Size:**

50ul

**Reactivity:**

Human

**Source:**

Rabbit

**Isotype:**

IgG

**Applications:**

ELISA, IHC

**Recommended dilutions:**

ELISA:1:2000-1:5000, IHC:1:50-1:200

**Protein Background:**

The B lymphocyte specific CD22 antigen, also designated B-lymphocyte cell adhesion molecule (BLCAM), sialic acid, binding Ig-like lectin 2 (Siglec-2) and Leu-14, is a type I integral membrane glycoprotein, structurally similar to other cell adhesion molecules (CAMs), which acts as a regulator of B cell signaling. CD22 is expressed as both a cytoplasmic and membrane protein during discrete stages of B cell lymphocyte differentiation. The cytoplasmic form of CD22, expressed early in B cell development, is a useful marker for acute lymphocytic leukemia. The membrane form of CD22 is expressed in mature B cells prior to their differentiation into plasma cells.

**Gene ID:**

CD22

**Uniprot**

P20273

**Synonyms:**

CD22 molecule

**Immunogen:**

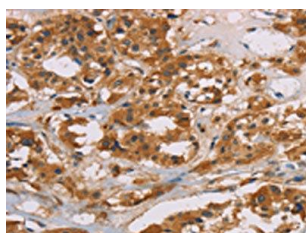
Fusion protein of human CD22.

**Storage:**

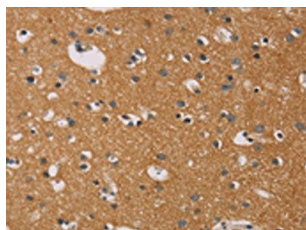
-20°C, pH7.4 PBS, 0.05% NaN<sub>3</sub>, 40% Glycerol

## Product Images

---



The image on the left is immunohistochemistry of paraffin-embedded Human thyroid cancer tissue using PACO15967(CD22 Antibody) at dilution 1/50, on the right is treated with fusion protein. (Original magnification: x—200).



The image on the left is immunohistochemistry of paraffin-embedded Human brain tissue using PACO15967(CD22 Antibody) at dilution 1/50, on the right is treated with fusion protein. (Original magnification: x—200).