

Product Information

Size:

50ul

Reactivity:

Human

Source:

Rabbit

Isotype:

IgG

Applications:

ELISA, WB, IHC

Recommended dilutions:

ELISA:1:1000-1:2000, WB:1:200-1:1000,
IHC:1:25-1:100

Protein Background:

Sialic acid, binding Ig-like lectin 9 is a protein that in humans is encoded by the SIGLEC9 gene. Putative adhesion molecule that mediates sialic-acid, dependent binding to cells. Preferentially binds to alpha-2,3- or alpha-2,6-linked sialic acid, The sialic acid, recognition site may be masked by cis interactions with sialic acid, on the same cell surface. Expressed by peripheral blood leukocytes (neutrophils and monocytes but not eosinophils).

Gene ID:

SIGLEC9

Uniprot

Q9Y336

Synonyms:

sialic acid, binding Ig-like lectin 9

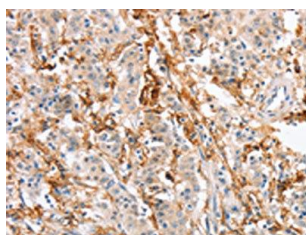
Immunogen:

Fusion protein of human SIGLEC9.

Storage:

-20° C, pH7.4 PBS, 0.05% NaN₃, 40% Glycerol

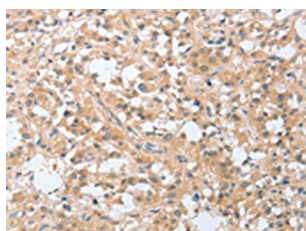
Product Images



The image on the left is immunohistochemistry of paraffin-embedded Human gastric cancer tissue using PACO15979(SIGLEC9 Antibody) at dilution 1/30, on the right is treated with fusion protein. (Original magnification: x—200).



Gel: 6%SDS-PAGE, Lysate: 50 μ g, Lane: Jurkat cells, Primary antibody: PACO15979(SIGLEC9 Antibody) at dilution 1/350, Secondary antibody: Goat anti rabbit IgG at 1/8000 dilution, Exposure time: 30 seconds.



The image on the left is immunohistochemistry of paraffin-embedded Human thyroid cancer tissue using PACO15979(SIGLEC9 Antibody) at dilution 1/30, on the right is treated with fusion protein. (Original magnification: x—200).