

Product Information

Size:

50ul

Reactivity:

Human

Source:

Rabbit

Isotype:

IgG

Applications:

ELISA, IHC

Recommended dilutions:

ELISA:1:2000-1:5000, IHC:1:50-1:200

Protein Background:

The protein encoded by this gene is a natural cytotoxicity receptor (NCR) that may aid NK cells in the lysis of tumor cells. The encoded protein interacts with CD3-zeta (CD247), a T-cell receptor. A single nucleotide polymorphism in the 5' untranslated region of this gene has been associated with mild malaria susceptibility. Three transcript variants encoding different isoforms have been found for this gene.

Gene ID:

NCR3

Uniprot

O14931

Synonyms:

natural cytotoxicity triggering receptor 3

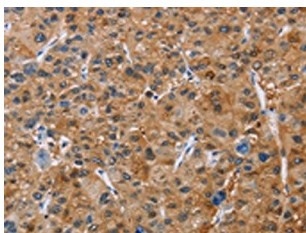
Immunogen:

Fusion protein of human NCR3.

Storage:

-20° C, pH7.4 PBS, 0.05% NaN₃, 40% Glycerol

Product Images



The image on the left is immunohistochemistry of paraffin-embedded Human liver cancer tissue using PACO15982(NCR3 Antibody) at dilution 1/40, on the right is treated with fusion protein. (Original magnification: x—200).