

Product Information

Size:

50ul

Reactivity:

Human

Source:

Rabbit

Isotype:

IgG

Applications:

ELISA, IHC

Recommended dilutions:

ELISA:1:1000-1:2000, IHC:1:25-1:100

Protein Background:

The protein encoded by this gene is a type I membrane protein and is a regulatory part of the complement system. The encoded protein has cofactor activity for inactivation of complement components C3b and C4b by serum factor I, which protects the host cell from damage by complement. In addition, the encoded protein can act as a receptor for the Edmonston strain of measles virus, human herpesvirus-6, and type IV pili of pathogenic Neisseria. Finally, the protein encoded by this gene may be involved in the fusion of the spermatozoa with the oocyte during fertilization.

Gene ID:

CD46

Uniprot

P15529

Synonyms:

CD46 molecule, complement regulatory protein

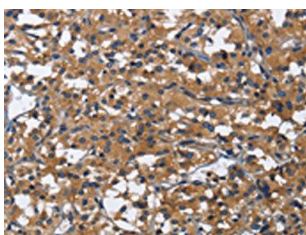
Immunogen:

Fusion protein of human CD46.

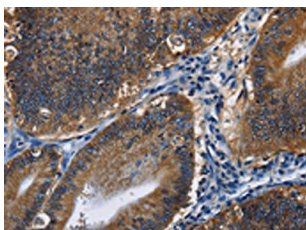
Storage:

-20°C; C, pH7.4 PBS, 0.05% NaN₃, 40% Glycerol

Product Images



The image on the left is immunohistochemistry of paraffin-embedded Human thyroid cancer tissue using PACO15988(CD46 Antibody) at dilution 1/30, on the right is treated with fusion protein. (Original magnification: x—200).



The image on the left is immunohistochemistry of paraffin-embedded Human colon cancer tissue using PACO15988(CD46 Antibody) at dilution 1/30, on the right is treated with fusion protein. (Original magnification: x—200).